

Designing Tomorrow: Human Futures in an AI World

17 November 2025



AI Forum
New Zealand
Te Kāhui Atamai Ihiko o Aotearoa

**New Zealand Vocational Education and Training
Research Forum**

Today's chat



.....a bit about the AI Forum NZ

And some of the work our AI in Education workstream is doing

AI's impact on our workforce and the future of work - and the growing importance of creatives in the corporate world.

Social License, the importance of people and Human centred design - and thinking about the future when ai powered robots will walk amongst us

Leading AI for a thriving Aotearoa

Innovative + Responsible + Inclusive



Te Kāhui Atamai Iahiko o Aotearoa

The AI Forum brings together Aotearoa's artificial intelligence community.

We are passionate about advancing the AI ecosystem through connections, advocacy, growing talent and collaboration.

We promote the economic opportunities raised by AI, supporting great applications and adopters.

We work to ensure that society can adapt to the rapid and far-reaching changes that AI technology will bring.



Mahsa McCauley
AUT
CHAIR



Maria Mingallon
Mott MacDonald
Deputy CHAIR



Madeline Newman
AI Forum NZ
Executive Director



Emily Reeve
Datagrid



Amy Dove
Deloitte



Anshuman Bannerjee
Spark NZ



Riki Hollings
Ngāti Ranginui



Maureen Crampton
Ngāti Kahu



Colby Raley
Microsoft



Alexander Lynch
Google



Emma MacDonald
Stats NZ



Jess Robertson
Earth Sciences NZ



Graeme Muller
NZTech



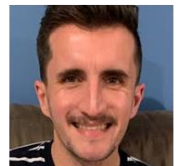
Brandon Hutcheson
Aware / HSO



Shivonne Londt
AWS



Ming Cheuk
ElementX



Liam Gilbey
Air NZ



Albert Bifet
University of
Waikato

The AI Forum in numbers

Founded in 2017, we have built a reputation across industry, academia and government as a trusted partner. In 2025 we have 8 Working Groups dedicated to creating work valuable to all of Aotearoa. We bring AI to life with stories featuring our members and their work. We produce influential reports and submissions. We run and amplify other local and national events that support the growth and collaboration of the AI ecosystem.

18+

Government submissions

Engaging on key relevant topics
Contributors to International AI Safety Report (Bletchley Park Agreement)

24+

Events

in 2025

Celebrating the work of our contributors, raising AI awareness, literacy, conversations and adoption

4th

Annual AI Summit

Approval rating above 70%
400+ delegates with 20% Active participation
1st Aotearoa AI Awards
Leadership Workshops

25+

Key Reports / White Papers + more in development

Prototyping:
Cross border collaborations
Regulation modelling

8

Key Working Groups

Delivering vital context for future govt policy and practical help for organisations adopting AI

4th

Hackathon Festival

Annual NZ-wide Hackathon
Creating safe places for all to play
Solving UN Sustainability Goals
2025: 400+ participants / 9 venues

200+

VOLUNTEERS in 2025

Creating content and contributing to building Leading AI for a thriving Aotearoa

4

Dedicated Websites

AIForum.org.nz
AIGovernance.nz
AIHackathon.nz
Aotearoaii.nz (AI Summit)

2025 Highlights

8 Working Groups

- AI Blueprint for Aotearoa + 6 Sectors: Education, Health, Environment, AEC, Agriculture, Creative Industries
- Kahui Māori Atamai Iahiko (Advisory Panel)
- **NEW:** Pacific Advisory Forum
- Gen AI – producing 'Living' White Paper
- AI Governance – aigovernance.nz
- Architecture Engineering & Construction (AEC)
- AI for the Environment
- AI for Human Resources

Key Outputs

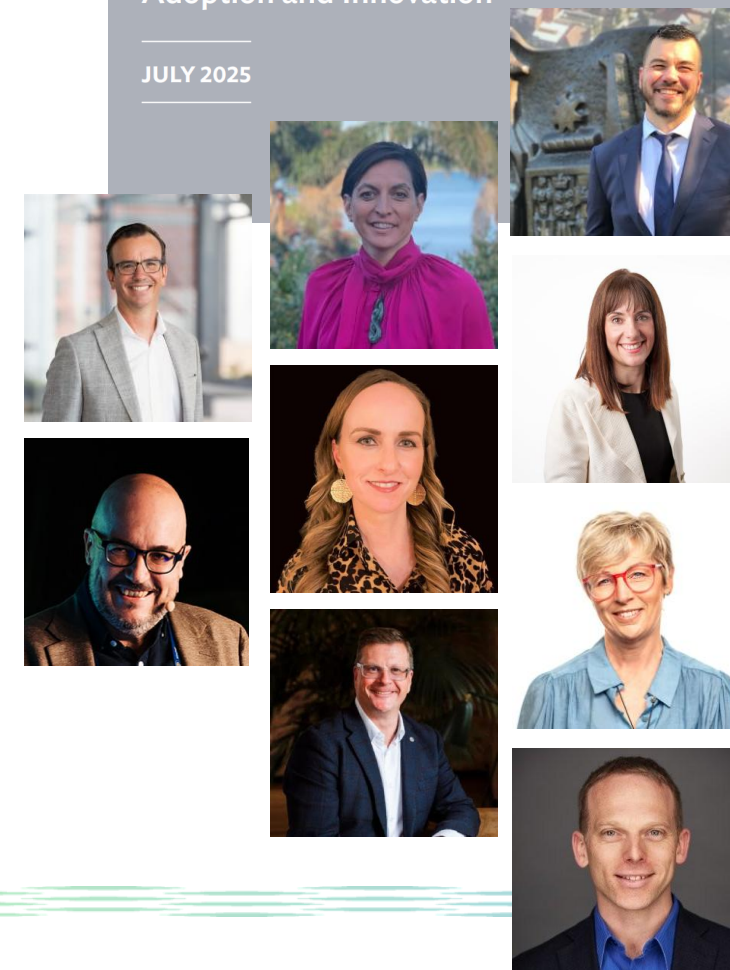
- Ensuring the right conversations are happening – no matter how difficult.
- AI in Action - Regular independent Research and Reports on AI's impact on productivity in Aotearoa
- AIGovernance.nz website providing best in class frameworks and toolkits for all
- AI Blueprint for Aotearoa – aligning industry to gov policy - published 24 July 2024, bi-annual updates
- Gen AI - a 'living' white paper
- Upskilling Workshops for senior decision makers
- AI in Creative Industries Summit and AI Film Festival
- 4th annual NZ-wide AI Hackathon Festival, August
- 4th annual AI Summit September
- 1st ever Aotearoa AI Awards
- Bringing AI to life - telling our member's stories at events, in reports, submissions and in the media
- 47 international standards relating to AI, Cyber Security and Risk, Biometrics, and Cloud Computing adopted
- Industry engagement for NZIAT \$70m AI funding

AI Blueprint for Aotearoa

New Zealand's Strategy for Artificial Intelligence: Investing with confidence

Accelerating Private Sector AI
Adoption and Innovation

JULY 2025



First published in July 2024 and updated in February 2025 – referenced in the Government strategy published in July 2025.

Six focus industries, partnering with other industry organisations are delivering plans of action that are changing the way New Zealanders are using and adopting AI.

Watch for refresh in early 2026



AI Blueprint – Sector Workstreams

Leading AI for a thriving Aotearoa

Innovative + Responsible + Inclusive



AI and Creatives

AI and Education

AI and AEC

AI and Agriculture

AI and Health

AI and the Environment



Te Kāhui
Atamai Ihiko
o Aotearoa
AI Forum New Zealand

AI and Architecture Engineering and Construction

FREE RESOURCES

- Developing the AEC Knowledge Hub for AI
- Created AI 101 Curriculum and launched AI in AEC Webinar Series
- Established the AI in AEC Community of Excellence
- Enabling AI in standard AEC contracts
- Driving the National Digital Twin vision
- Contributed to the National Infrastructure Plan (NZ's 30-year infrastructure strategy)



AI in Education

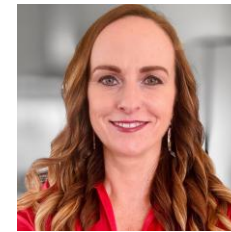


A collaboration led by Dr Geri Harris (AUT)

FREE RESOURCES (available soon):

- AI and whanau - recognising that whanau / community and are integral to bringing AI into education successfully
- A database of professional development for education providers
- AI literacy self diagnostic tool

Microsite has been built (powered by Webbased AI), with content currently being reviewed prior to publication.



AI is revolutionizing learning



Te Kāhui
Atamai Iahiko
o Aotearoa
AI Forum New Zealand

Personalised Education Paths

Adapting educational materials to suit each learner's style, improving understanding and engagement with tailored content.

Efficient Training and Feedback

Automate assessments and intelligent feedback, stream-lining the training process

Expanded Global Access

Deliver quality education to remote and underserved communities, bridging educational gaps worldwide.



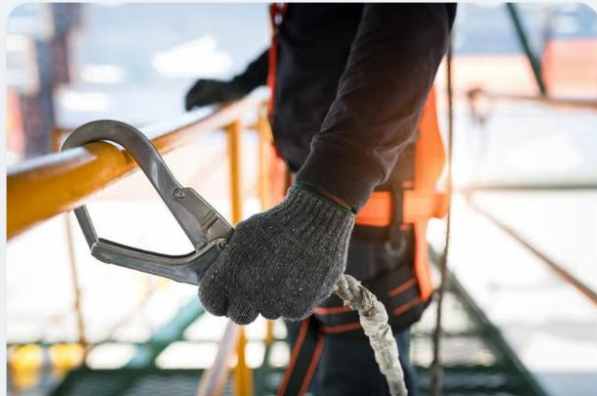
AI is revolutionizing learning



AI powered VR is providing accessible, workforce and just in time training



CT Scanner



Working at Heights

COMING SOON



Operation, treat, risk, assessment



Aircraft Safety Familiarisation Training

Learn about the hazards and procedures to follow when working around an aircraft.

Learn more



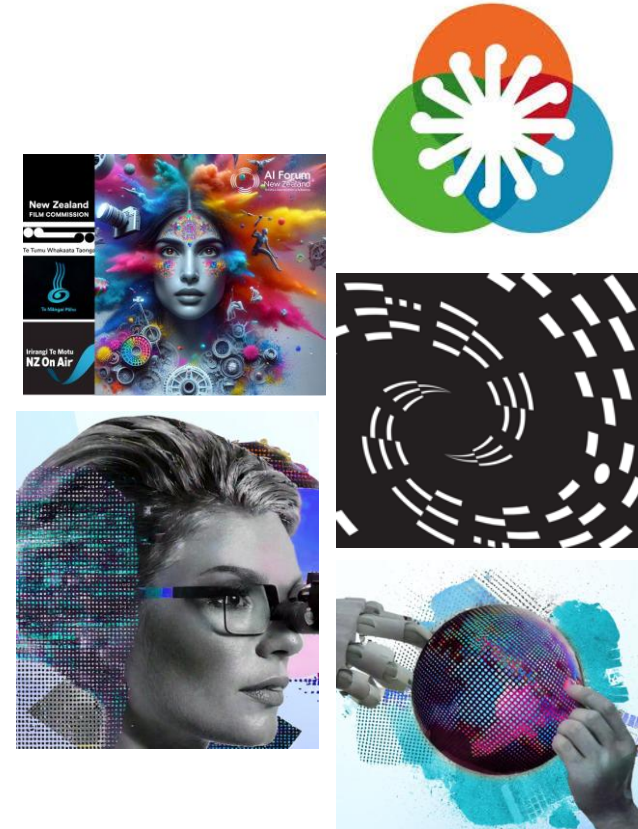
Creatives are taking over the World!



3rd annual **AI and Creative Industries Summit**

May 2026, Auckland and Wellington

- Bringing Global conversations to Aotearoa
- Featuring Inspirational stories from New Zealand creatives
- A place to feature the difficult AI conversations
- Bringing rangitahi into the room to ensure there is balance and inclusion
- 1 minute AI Film Festival



DATACOM

Manatū Taonga | Ministry for Culture & Heritage

Futureworks
Sound Vision Control

Creatives are taking over the World!

HOW DOES THAT WORK?

Partnering with the technology – not being replaced by it

Productivity boosts create space in organisations – often in unexpected ways

People excel at conceptual thinking, direction and emotional resonance

AI democratises creative work by lowering barriers to entry - empowering non-designers and non-writers to participate in the creative process

Raises the bar for professionals to lead and guide those efforts with expertise



JOB ROBOCALYPSE - SPOILER ALERT



[News](#) [Life](#) [Radio](#) [Podcasts](#) [Video](#) [Te Ao Māori](#) [Pacific](#) [IndoNZ](#) [中文](#)

[New Zealand](#) [World](#) [Politics](#) [Pacific](#) [Te Ao Māori](#) [Sport](#) [Business](#) [Country](#) [Local Democracy Report](#)

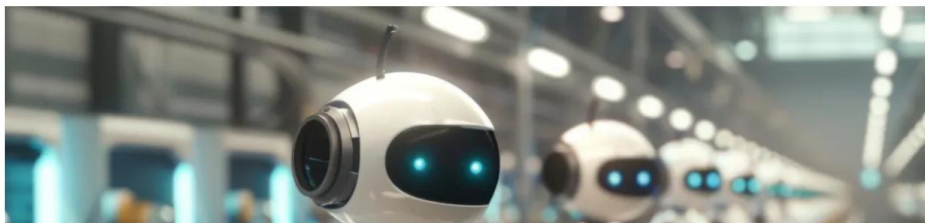
NEW ZEALAND / BUSINESS

Is AI really coming for our jobs and wages? Past predictions of a 'robot apocalypse' offer some clues

12:17 pm on 10 November 2025

Share this [Twitter](#) [Facebook](#) [Email](#) [Reddit](#) [LinkedIn](#)

By Tom Coupe* of **THE CONVERSATION**



Tom Coupe is an Associate Professor of Economics, University of Canterbury.

52 studies from around the world published since 2017 - covering 2586 individual estimates - found no strong evidence that robots have a consistent impact on wages - **the effect was close to zero.**

Roles are changing:

- Routine cognitive or physical tasks have diminished
- Those requiring creativity, have become increasingly vital.

SO WHAT?

Upskilling and learning how to collaborate effectively with robots - and AI - is the right strategy for staying competitive in today's labour markets.

Upskill and concentrate on the positives instead of panic-driven regulation - and **support workers in gaining those human skills that automation makes more valuable.**

What about my career?



WHAT ARE WE SEEING?

To date the best examples of AI integration we are seeing – those that are providing the strongest RoI – are where **humans are working in partnership with AI**

Cross-functional collaboration increases ...and the new roles that are created result in career mobility

This reinforces the thinking that upskilling our existing workforce and new workforce entrants will pay in the short term

Workforce Impacts



91%



14%

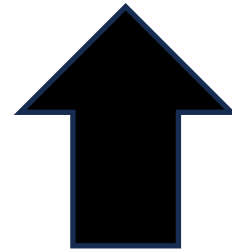


45%





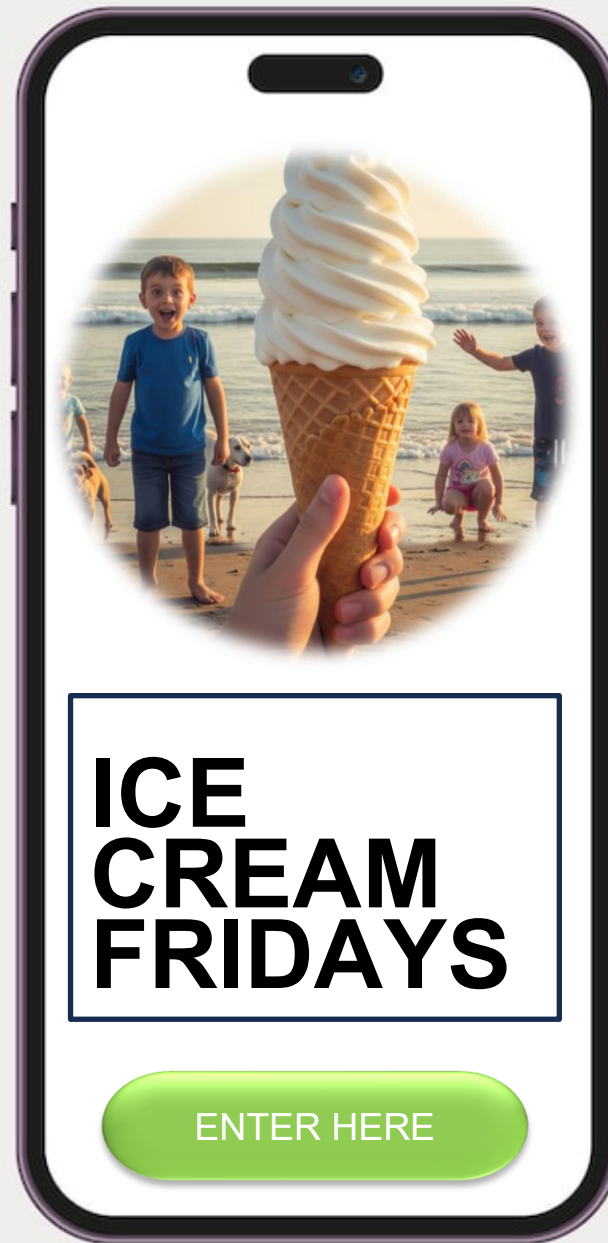
55%



NEW JOB ROLES CREATED

- AI augmented roles
- Domain expertise in Tech and Design, which leads to better results


Resulting in inclusion and career mobility



Good Governance and AI Safety




HOME PATHWAYS LIBRARY LEADERSHIP & COMMUNITY AI FORUM MAIN SITE SUBSCRIBE 





Te Kāhui
Atamai Iahiko
o Aotearoa
AI Forum New Zealand


AI Governance

A dedicated resource for organisations across Aotearoa New Zealand to adopt AI responsibly and confidently, grounded in local values, and inclusive of Māori perspectives

ADOPTION

KNOWLEDGE

COMMUNITY



Te Kāwanatanga o Aotearoa
New Zealand Government

Responsible AI Guidance for Businesses

Investing with confidence

Accelerating Private Sector AI
Adoption and Innovation

JULY 2025

POWERED BY
fractional





Most organisations are
already using AI



Upskilling in AI is now a vital part
of everyone's education journey





because the future belongs
to teams who keep learning.



academyEX

Be SAFE – don't be careless



AI Forum
New Zealand
Te Kāhui Atamai Iahiko o Aotearoa

'A predator in your home': Mothers say chatbots encouraged their sons to kill themselves

5 days ago

Share  Save 



Laura Kuenssberg

Presenter, Sunday with Laura Kuenssberg



Te Kāhui
Atamai Iahiko
o Aotearoa
AI Forum New Zealand

Building trust and social license



Key things we need:

- AI Literacy
- Digital and AI Access
- Responsible use - understanding the risks so we can use AI safely
- Human Centred Design

Things that don't help:

- Disaster headlines like that one
- Unauthorised and unexpected use of our 'stuff'
- Unexpected use of hallucinated facts

A woman with short reddish-brown hair, wearing a white blazer, a pearl necklace with a large diamond brooch, and a pearl earring, is smiling and looking towards a white humanoid robot. The robot has a large, rounded head and a camera-like eye. In the background, a blue screen displays the text "AI SUMMIT" in white capital letters. The scene is set in a dimly lit room with warm lighting from a wall sconce.

AI
SUMMIT

Chatting with a guy I met at the Aotearoa AI Summit

BBC

Moscow City News Agency



Watch: Russia's AI robot falls seconds after being unveiled



AUT

TE WĀNANGA ARONUI
O TĀMAKI MAKAU RAU

Why human-shaped robots loom large in Musk's Tesla plans

6 days ago

Share  Save 

Zoe Kleinman, Technology editor and Liv McMahon, Technology reporter



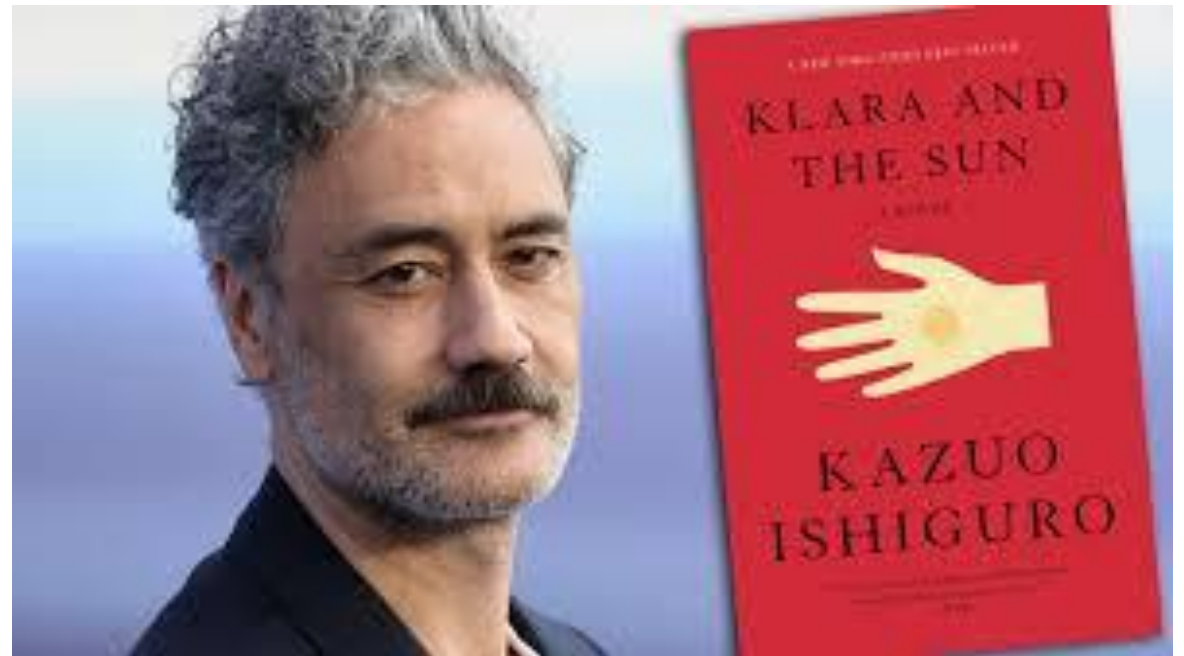
B B C

Tesla's Optimus has appeared in Tesla showrooms, on its factory floors and has even posed with Kim Kardashian in a cringe worthy photoshoot...



First unveiled in 2022, Musk believes his droid could play a huge role in the homes and lives of people all over the world - and one of the many tasks Musk must complete to get his **\$1 trillion** pay-deal is to **deliver a million AI bots over the next decade.**

Physical AI - when AI powered robots walk amongst us





Physical AI - when AI powered robots walk amongst us

AI's in the interaction with the physical world is challenging.

Uncertainties:

- Legal
- Cultural
- Public acceptance and readiness





AI Forum
New Zealand
Te Kāhui Atamai Iahiko o Aotearoa